

Panel regulator PM51-2

spectron lab



Panel regulator PM51-2



Example:
PM51
panel mounted

Product features

- Brass (chrome plated) panel pressure regulator
- For non-corrosive gases and gas mixtures up to quality 6.0
- 2 ports for flexible and individual configuration
- Very stable outlet pressure
- Suitable for inlet pressures up to 300 bar
- Max. outlet pressures 1,5 up to 200 bar *
- Metal-to-metal seal to atmosphere
- Suitable for ECD-applications
- Pressure regulator can be evacuated
- Inlet filter
- Approved for use with oxygen
- Simple outlet pressure limitation by handwheel
- Easy to install
- New laboratory-style design
- Ergonomically designed

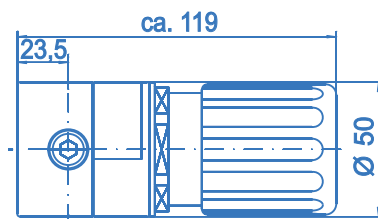
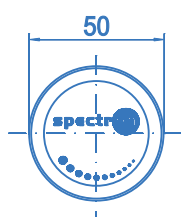
* 1,5 / 4 bar only for inlet pressure \leq 50 bar

Technical data

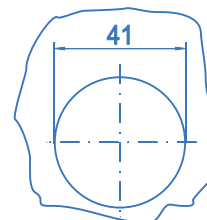
Type	single-stage
Inlet pressure P_1	max. 300 bar
Outlet pressure P_2	1,5 / 4 bar ($P_1 \leq 50$ bar) 10 / 20 / 50 / 100 / 200 bar ($P_1 > 50$ bar)
Materials	
Body regulator:	chrome plated brass
Valve seat:	Hytrel ($P_1 > 50$ bar: PA)
Diaphragm:	Hastelloy C276
Filter:	Sintered SS 316L
In- and outlets	1/4" NPT-F
Temperature range	-30°C to +60°C
Leak rate (to atmosphere) (via seat)	1×10^{-8} mbar l/s He 1×10^{-6} mbar l/s He
Flow capacity	$C_v = 0.15$
Weight	1.0 kg

Dimensions
PM51-2

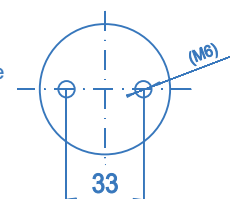
Side view



Bore template
for panel
mounting



Fixing holes
for panel surface
mounting



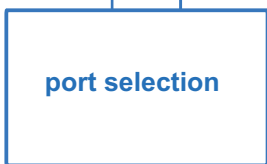
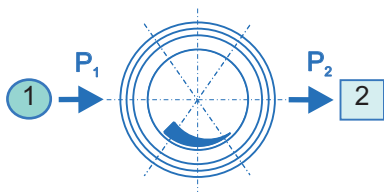
Panel regulator PM51-2



Ordering information:
Panel regulator PM51-2

In- / outlets

- CM 1/4 - 1/8" / 1/4" / 1/2" - OD compression fitting (brass)
- CM 6 - 3/6/8/10/12 mm compression fitting (brass)
- CE 1/4 - 1/8" / 1/4" / 1/2" - OD compression fitting (stainless steel)
- CE 6 - 3/6/8/10/12 mm compression fitting (stainless steel)
- 0 - 1/4"-NPT-F (port only)



PM51 - 2 - 300 - 10 - 1 - 2 - N2

Inlet pressure P₁

- 10 - max. 10 bar
- 20 - max. 20 bar
- 50 - max. 50 bar
- 100 - max. 100 bar
- 200 - max. 200 bar
- 300 - max. 300 bar

Outlet pressure P₂

- 1,5 - to 1,5 bar (P₁ ≤ 50 bar)
- 4 - to 4 bar (P₁ ≤ 50 bar)
- 10 - to 10 bar
- 20 - to 20 bar
- 50 - to 50 bar
- 100 - to 100 bar
- 200 - to 200 bar

Type of gas

Please specify type of gas (for selection of valve seat materials)

Ordering example:
PM51-2-300-10-CE6-CE6-N2

